



C&O

POWDER COATINGS

EST. 1985

Bring colour to your vision

CanDoCoatings.co.uk



FIRST STREET, MANCHESTER

A BRIEF HISTORY

ESTABLISHED IN 1985, C&O HAS GROWN TO BECOME THE PREMIER POWDER COATER IN THE NORTH WEST OF ENGLAND.

With a strong background in the architectural market, our clients also include bespoke engineering, sheet metal fabricators as well as general industrial companies.

Our finishing has been utilised not just in some of the UK's most prestigious projects, but all over the world. With developments in Asia, the Middle East and South America, C&O has built an enviable reputation amongst its peers.

A principal of reinvestment has always been a core belief at C&O with both plant and personnel increasing significantly throughout our history.

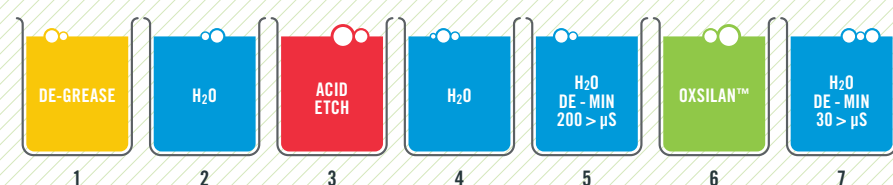
There is a high emphasis on quality within the company which is reflected in our ISO 9001:2008 accreditation and supplier approvals which include Akzo Nobel, Inver, Axalta, Syntha Pulvin, IGP and Tiger Powder Coatings.



CONTACT US ON T. 01744 818776 OR enquiries@CanDoCoatings.co.uk
WE WOULD BE PLEASED TO DISCUSS YOUR POWDER COATING REQUIREMENTS.

POWDER COATING IS CONDUCTED IN THREE KEY STAGES: STAGE ONE: PRE-TREATMENT; STAGE TWO: COATING; STAGE THREE: CURING.

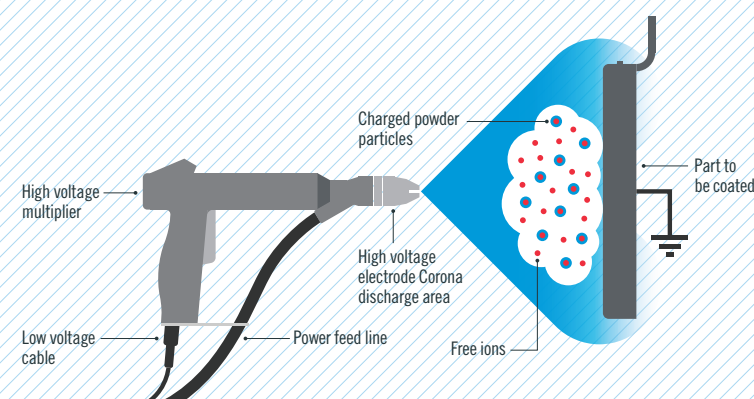
STAGE ONE: PRE-TREATMENT



The pre-treatment is critical in ensuring the long term performance of the finish. Without pre-treatment, the atmospheric conditions will over time permeate through the coating and corrode the metal. Our pre-treatment promotes excellent adhesion and protects against premature corrosion.



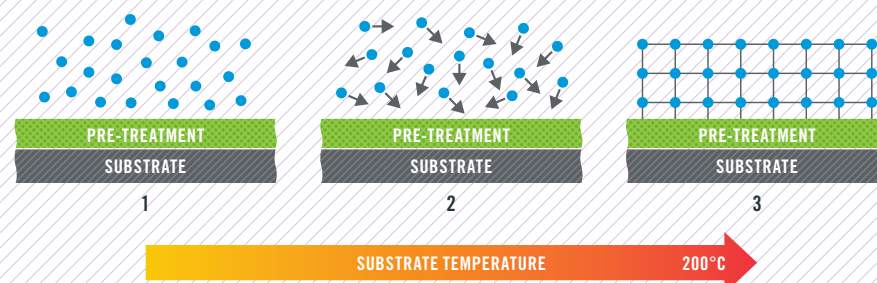
STAGE TWO: COATING



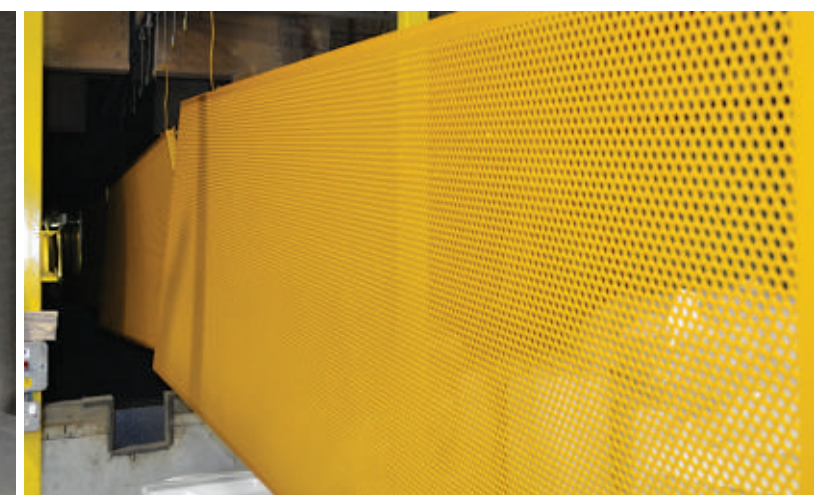
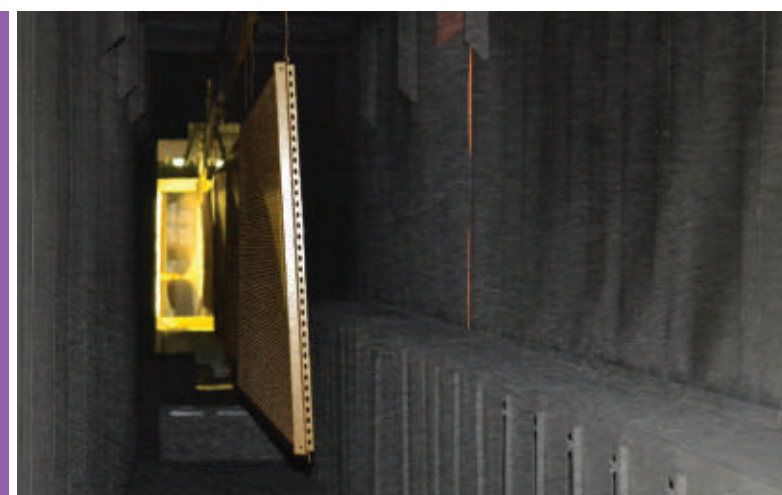
After pre-treatment, the metal is suspended on a conveyerised production line and passes into the spray booth for coating. Powder is electrostatically applied to the pre-treated substrate, giving an even coating.



STAGE THREE: CURING



1 The coated metal enters the oven causing it's temperature to increase.
2 As the substrate's temperature increases, the powder begins to melt and flow evenly across the surface.
3 Once the critical temperature of 200°C is achieved, the powder begins to harden. Strong cross links are formed within itself and to the pre-treated substrate giving a very robust finish.





C&O HAS CONTINUOUSLY INVESTED IN NEW TECHNOLOGIES. THIS ENSURES WE ARE ABLE TO FULFIL THE DEMANDS OF ALL INDUSTRIES & DELIVER A FIRST CLASS SERVICE.

FACILITIES AT OUR 24,000 FT² SITE, INCLUDE:

7 stage immersion industry approved pre-treatment facility with a capacity of 6.2m x 1.8m x 0.6m.

Four horizontal conveyerised production lines with automatic spray booths.

Comprehensive stock of RAL and BS colours.

Sample panel ordering.

Clients who wish to see a panel representative of the finished product can do so before any orders are placed.

Colouring matching service.

In conjunction with our paint suppliers, bespoke colours can be procured to an architectural grade specification. If clients wish, panels can be despatched first for approval before the batch is made.

Fully equipped on site laboratory

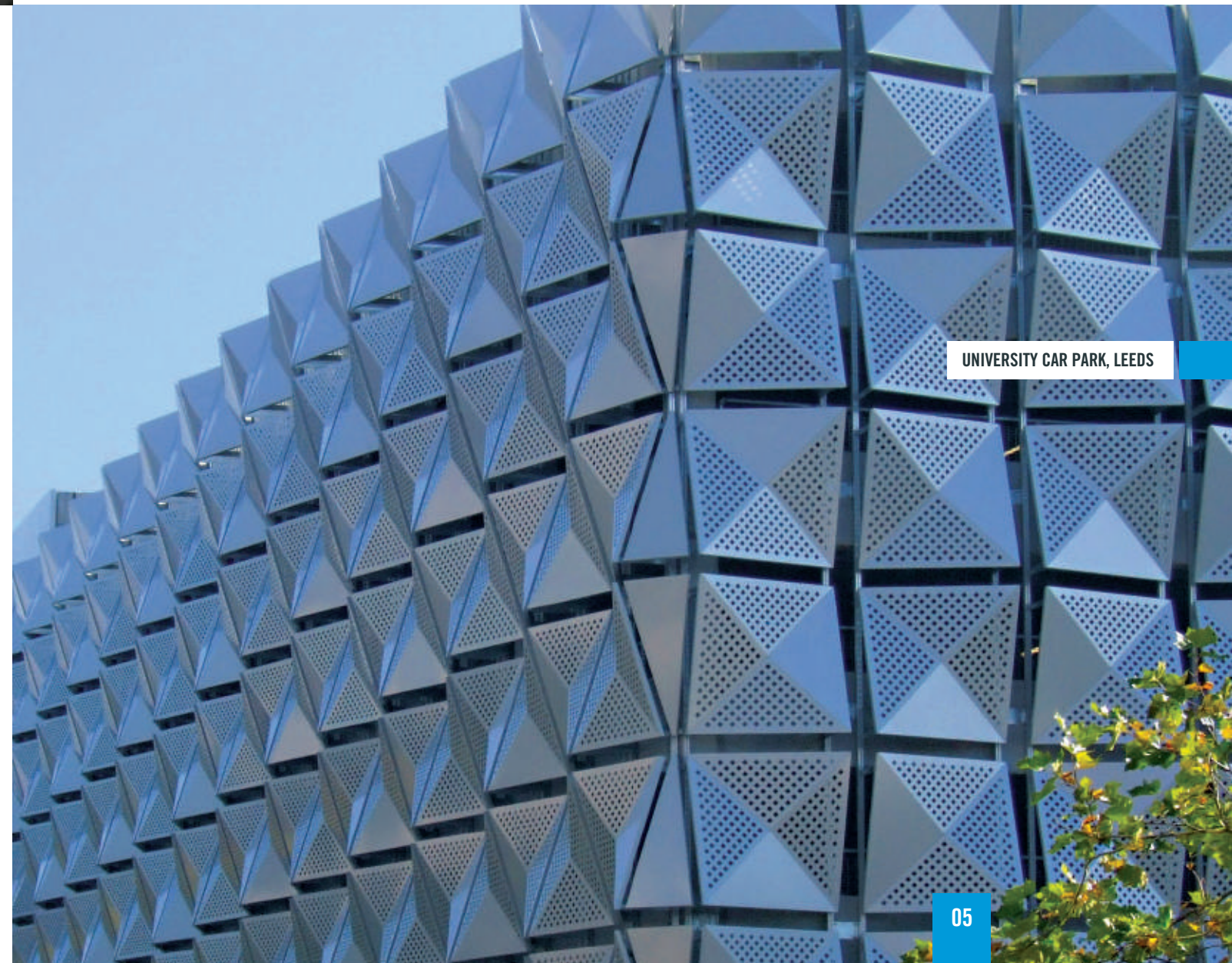
carries out daily sampling and testing of the pre-treatment and coating plant in accordance with our status as an approved applicator.

A dedicated transport service.

We offer collection and deliveries, to ensure the best possible turnaround times.

FOR MORE INFORMATION ABOUT OUR CAPABILITIES CONTACT US

ON T. 01744 818776 OR enquiries@CanDoCoatings.co.uk



UNIVERSITY CAR PARK, LEEDS

C&O POWDER COATINGS HAS VAST EXPERIENCE WITHIN THE COMPANY. OUR COLLECTIVE EXPERIENCE SPANS OVER 100 YEARS.

To conform to British standards and retain our industry approvals, C&O conducts a series of daily tests. In addition, panels are independently tested to 1000 hours acetic acid salt spray.

3000 HOUR SALT SPRAY TEST

As part of the Tiger coatings approval process for their 68 series. C&O panels were successfully tested to 3000 hours, three times the standard.

This report once again signals the strength and reliability of our process which is now recognised as one of the best in the UK.



TESTING: Aluminium test panels/profiles as provided by TIGER Coatings, pre-treated under standard production circumstances have been powder coated with TIGER Drylac® Series 058/20031. Coated panels/profiles have been subject to Saltspray and Humidity Test for the duration of 3000 hours each.

Humidity Resistance Test acc. to EN ISO 6270-1 – duration 3000 hours

T 2344: No undercutting at the crosscut
No blistering of the surface

Saltspray Resistance Test acc. to ISO 9227 – duration 3000 hours

S 5556: No undercutting at the crosscut
No blistering of the surface

CONCLUSION: Company qualifies as a TIGER Drylac® Series 58 Certified Applicator.

THE IMPORTANCE OF PRE-TREATMENT

Pre-treatment is vital in allowing the paint finish to perform to its full potential. All paints are porous and will over time allow atmospheric conditions to permeate through the coating onto the metal. To safeguard against this, all substrates are chemically pre-treated in order to protect against corrosion and promote good adhesion.

ALUMINIUM 5005 H24



WITH C&O'S PRE-TREATMENT



WITHOUT PRE-TREATMENT



AXALTA – ANODIC COLLECTION

 ANODIC CHAMPAGNE AE20101000220	 ANODIC BRONZE AE20108000320	 ANODIC BROWN AE20108000420	 ANODIC GOLD AE20111000820
 ANODIC NATURA AE20107000120	 ANODIC SAPPHIRE AE20105000320	 ANODIC MALACHITE AE20106000620	 ANODIC BLACK AE20104000720

C&O is well placed to provide our customers with up-to-date advice during the specification process.

We have experience of using a broad range of finishes including architectural, textured and anti-graffiti powders.

In recent years there has been a demand to match to anodizing. The resultant “anodic” ranges are now being specified throughout the market place.

Please see Axalta’s range, we are also able to offer ranges from Interpon, IGP and Tiger powder coatings.

FOR FURTHER DETAILS ON OUR POWDER COATING ANODIC RANGES PLEASE VISIT OUR WEBSITE
CanDoCoatings.co.uk



ONE HYDE PARK, LONDON



HEATHSIDE AND LEFTBRIDGE, LONDON



WHY WORK WITH C&O?

C&O HAS BUILT AN ENVIABLE REPUTATION WITHIN THE MARKET FOR QUALITY, SERVICE AND PROFESSIONALISM. STRIVING TO BE THE BEST POSSIBLE PARTNER FOR OUR CUSTOMERS, WE WANT THEM TO BE PROUD OF USING C&O.

WHEN YOU CHOOSE C&O AS YOUR SUPPLIER, YOU ARE SELECTING A PARTNER WHO WILL HELP YOUR BUSINESS GROW. WE LIKE TO CONSIDER OURSELVES AN EXTENSION OF YOUR OWN COMPANY.

KEY SERVICE FOCUS:

QUICK LEAD TIMES

Always adapting to the demands of industry, we understand deliveries must be met to stay ahead of the competition. C&O prides itself on being able to tailor its lead times to customer's needs.

CONSISTENT QUALITY

With over 30 years of trading, C&O has a proven track record of delivering on quality.

PRICE

Excellence without the premium. Keeping prices in line with customer's requirements is fundamental at C&O.

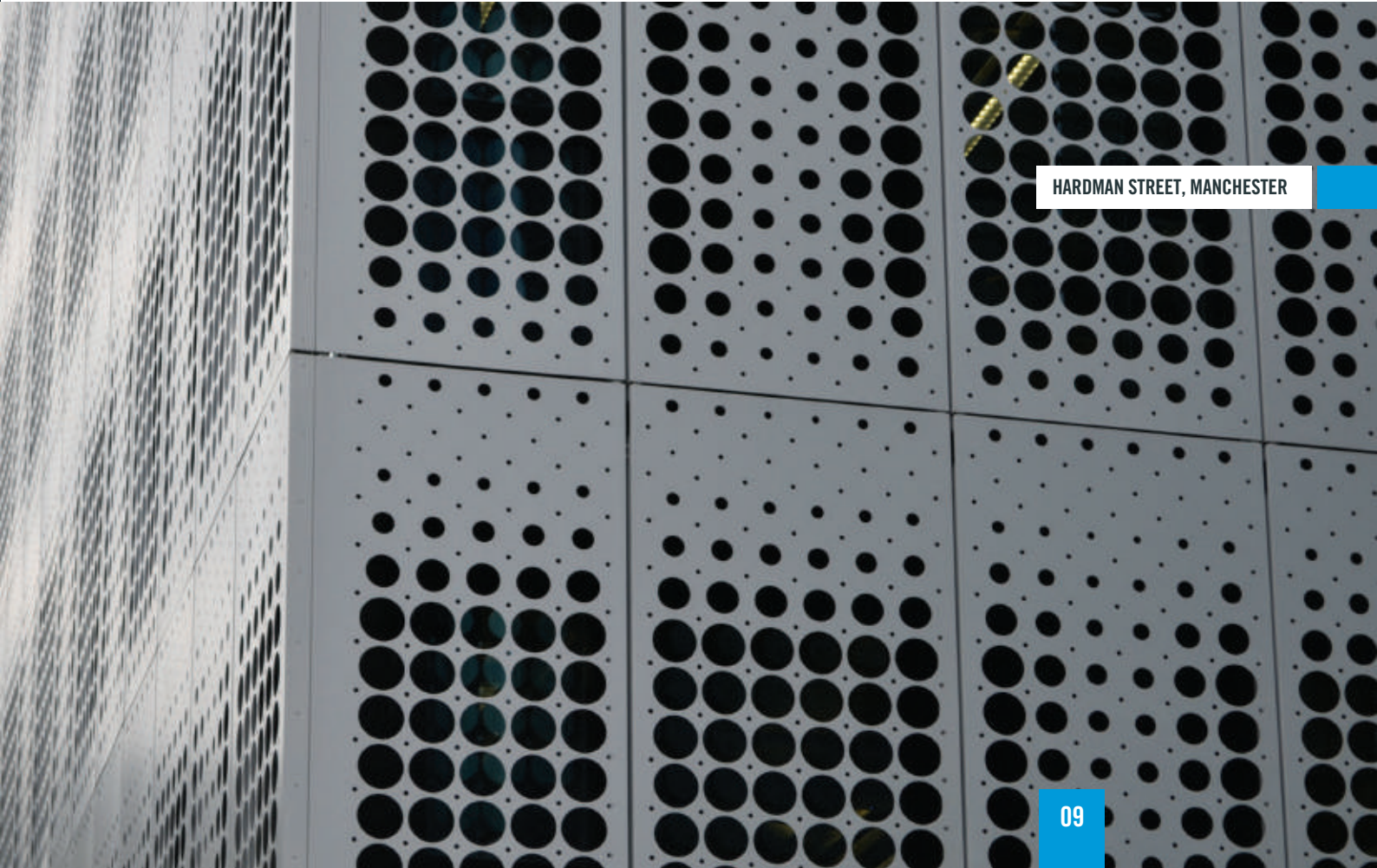
TECHNICAL SUPPORT

During tendering and throughout a project, C&O is experienced in providing technical support. Whether sampling, matching or specifying, C&O has the expertise to meet the client's needs.

FLEXIBLE TRANSPORT

With a fleet of five vehicles, we excel in our ability to respond to a customer's request.

TO FIND OUT WHAT C&O COULD DO FOR YOUR BUSINESS CONTACT US ON T. 01744 818776 OR enquiries@CanDoCoatings.co.uk



HARDMAN STREET, MANCHESTER



POWDER COATINGS.



syntha pulvin



1 BRINDLEY ROAD, REGINALD ROAD
INDUSTRIAL ESTATE, SUTTON,
ST HELENS, MERSEYSIDE WA9 4HY

E. enquiries@CanDoCoatings.co.uk
T. 01744 818776 F. 01744 819268

CanDoCoatings.co.uk